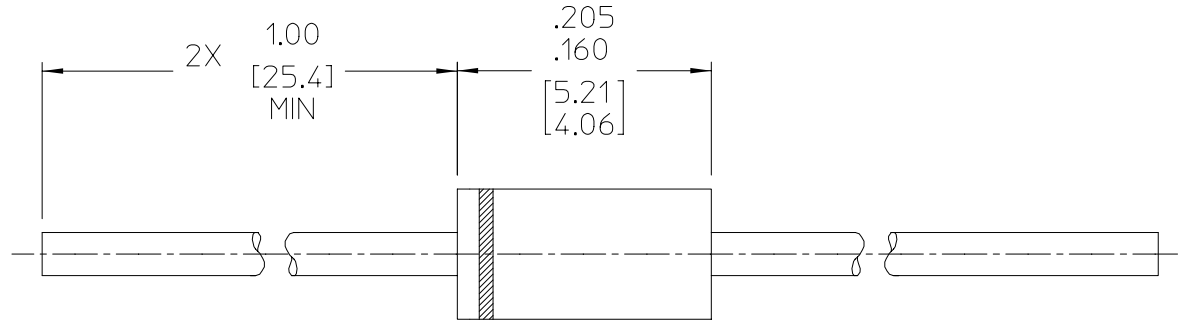
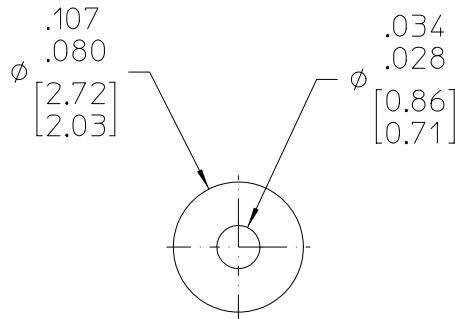


VICOR CONFIDENTIAL

THIS DOCUMENT AND THE DATA DISCLOSED HEREIN OR HEREWITH IS NOT TO BE REPRODUCED, USED, OR DISCLOSED IN WHOLE OR IN PART TO ANYONE WITHOUT PERMISSION OF VICOR CORP.

| REV. | DESCRIPTION | DATE | APPROVED |
|------|-----------------------|--------------|----------|
| #1 | DRAWN FOR DEVELOPMENT | DPK 10/20/03 | GCK |



ELECTRICAL CHARACTERISTICS @T =25°C (UNLESS OTHERWISE SPECIFIED)

| PARAMETERS | | | UNITS |
|---|-----------------|--------------------|-------|
| RATINGS | | | |
| PEAK REPETITIVE REVERSE VOLTAGE | V_{RRM} | 20 | V |
| NON-REPETITIVE PEAK REVERSE VOLTAGE | V_{RSM} | 24 | V |
| RMS REVERSE VOLTAGE | $V_{R(RMS)}$ | 14 | V |
| AVERAGE RECTIFIER FORWARD CURRENT (NOTE 1) | I_o | 1.0 | A |
| AMBIENT TEMPERATURE | T_A | 85 | °C |
| NON-REPETITIVE PEAK SURGE CURRENT | I_{FSM} | 25 (for one cycle) | A |
| OPERATING AND STORAGE JUNCTION TEMP RANGE | T_J, T_{stg} | -65 to +125 | °C |
| PEAK OPERATING JUNCTION TEMP | $T_{J(pk)}$ | 150 | °C |
| THREMRAL CHAR | | | |
| THERMAL RESISTANCE, JUNCTION TO AMBIENT | $R_{\theta JA}$ | 80 | °C/W |
| ELECTRICAL CHAR | | | |
| MAX INSTANTANEOUS FORWARD VOLTAGE (NOTE 2) | V_F | .32 .45 .75 | V_F |
| MAX INSTANTANEOUS REVERSE CURRENT | I_R | 1.0 1.0 | I_R |
| 1.) LEAD TEMPERATURE REFERENCE IS CATHODE LEAD 1/32" FROM CASE 2.) PULSE TEST: PULSE WIDTH = 300 μ s, DUTY CYCLE = 2.0%. | | | |

NOTES:

- POLARITY IS INDICATED BY CATHODE BAND.
- MAXIMUM LEAD TEMPERATURE FOR SOLDERING PURPOSES IS 250°C (482°F), 3/8 INCH FROM CASE OR 10 SECONDS AT 5.0 LBS. TENSION.
- CASE IS TRANSFER MOLDED PLASTIC.

| | | | | |
|--|----------------------|--|-------------------------|------------------|
| DRAWN BY D.P. KELLY | DATE 10/03 | | | |
| UNLESS OTHERWISE SPECIFIED DIMENSIONS ARE IN INCHES - TOLERANCES ARE: FRACTIONS DECIMALS ANGLES ±1/64 .XX ±.01 ±1° .XXX ±.005 | | RECTIFIER, SCHOTTY, 1A, 20, 30, 40 VOLT | | |
| THIRD ANGLE PROJECTION | SIZE B | FSCM NO. 67131 | DWG NO. 26108 | REV #1 |
| DO NOT SCALE DRAWING | SCALE 10X | SHEET 1 OF 1 | | |