

8

7

6

5

4

3

2

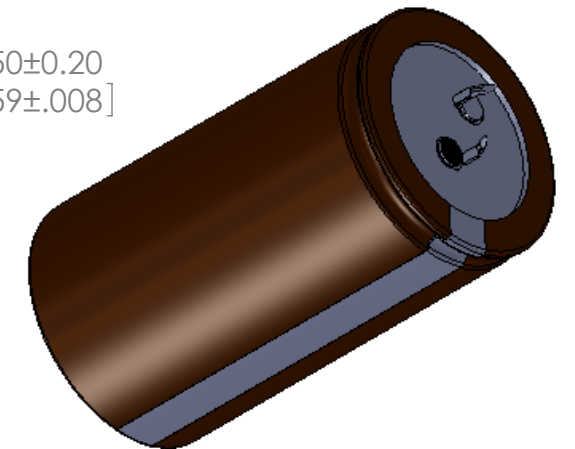
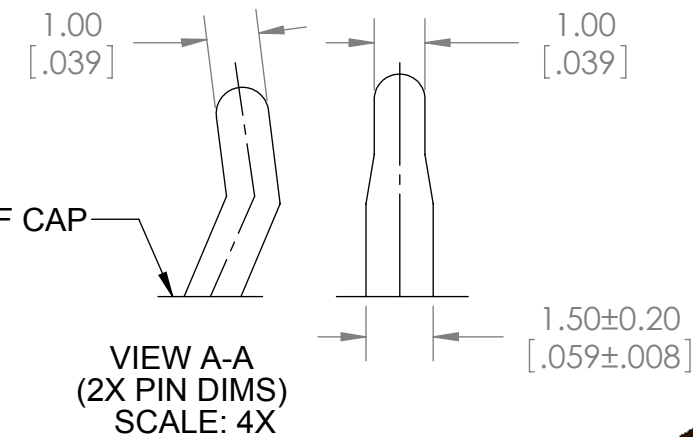
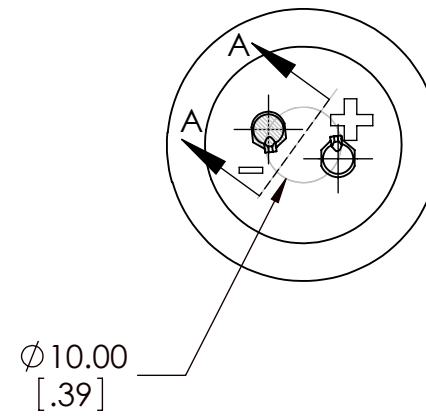
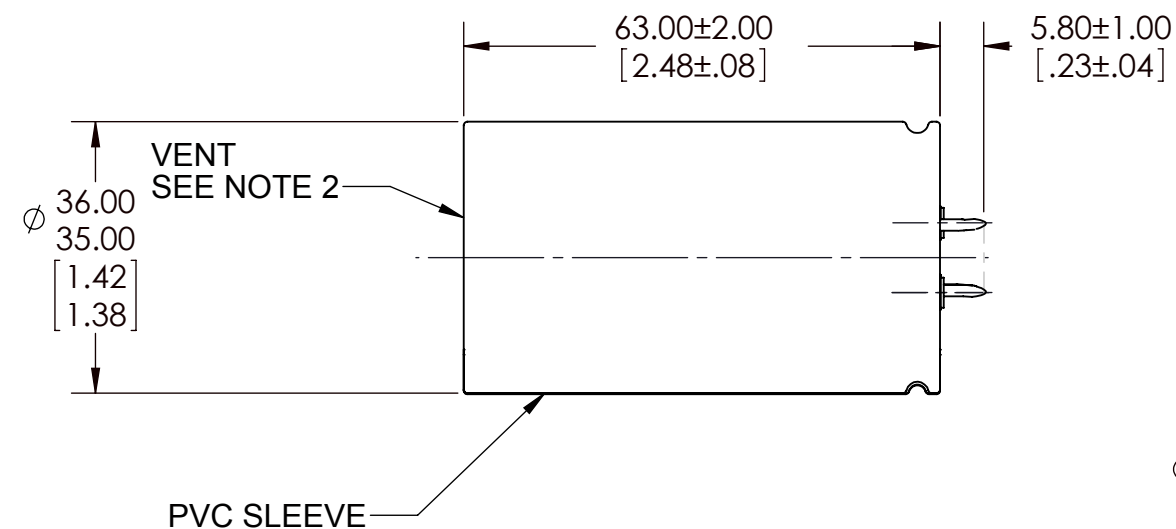
1

VICOR CONFIDENTIAL

THIS DOCUMENT AND THE DATA DISCLOSED HEREIN OR HEREWITH IS NOT TO BE REPRODUCED, USED OR DISCLOSED IN WHOLE OR IN PART TO ANYONE WITHOUT THE PERMISSION OF VICOR CORP.

REVISIONS

REV	DESCRIPTION	DATE	APPROVED
1	RELEASE PER E064325	GCK 10/17/05	EF
2	REVISED PER E100698A	KUK 5/19/10	JG



ELECTRICAL CHARACTERISTICS @ Ta= +20°C, 120Hz (UNLESS OTHERWISE SPECIFIED)

PARAMETER	SYMBOL	MIN	MAX	UNITS	TEST CONDITIONS
CAPACITANCE	C	1760	2640	uF	
WORKING VOLTAGE	V _{DCW}	200		V	
SURGE VOLTAGE	V _{SURGE}		250	V	
LEAKAGE CURRENT	I _{DCL}		3.0	mA	after 5 MIN@ +20°C
DISSIPATION FACTOR	tan δ		0.15		
EQUIVALENT SERIES RESISTANCE	ESR		0.113	Ω	
RIPPLE CURRENT	I _{RIPPLE}		3.62	Arms	Ta= +105°C
OPERATING TEMPERATURE RANGE	T _{OP}	-40	+105	°C	

NOTES:

- MATERIAL: ALUMINUM ELECTROLYTIC.
- VENT MAY BE LOCATED EITHER ON THE BOTTOM OR SIDE OF THE CAN.
- RoHS COMPLIANT, LEAD FREE PER CST-0001 LATEST REVISION.

MAXIMUM PERMISSIBLE RIPPLE CURRENT

FREQUENCY MULTIPLIER

TEMPERATURE MULTIPLIER

FREQUENCY IN Hz					
50	120	300	1K	10K	100K
0.81	1	1.17	1.32	1.45	1.50

TEMPERATURE MULTIPLIER	+45°C	+60°C	+70°C	+85°C	+105°C
	2.64	2.23	2.12	1.73	1.00

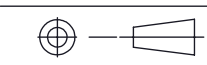
DRAWN	DATE
P.E.IENI	09/29/05

SWD

**CAPACITOR, ALEL, RADIAL,
2200uF, ± 20%, 200V**

UNLESS OTHERWISE SPECIFIED
DIMENSIONS ARE MM [INCH]
TOLERANCES ARE:
DECIMALS ANGLES
X.XX [X.X] = ±0.01 [0.25] ±1°
X.XXX [X.XX] = ±0.005 [0.127]

THIRD ANGLE PROJECTION



DO NOT SCALE DRAWING

SIZE	CAGE CODE	DWG NO	REV
B	67131	30483	2

SCALE 2 : 1

SHEET 1 OF 1

8

7

6

5

4

3

2

1