

8

7

6

5

4

3

2

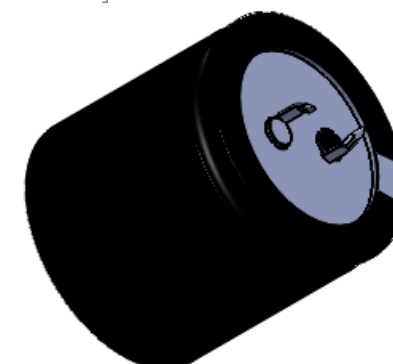
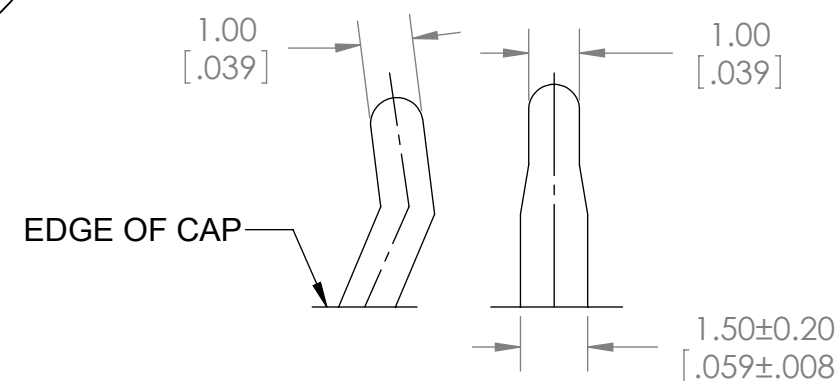
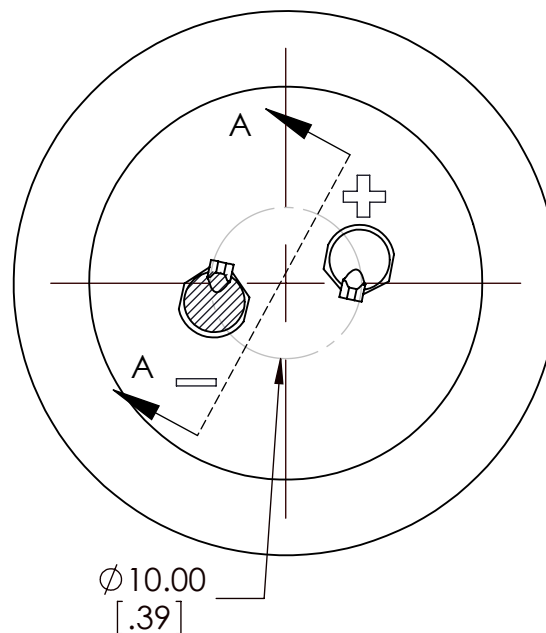
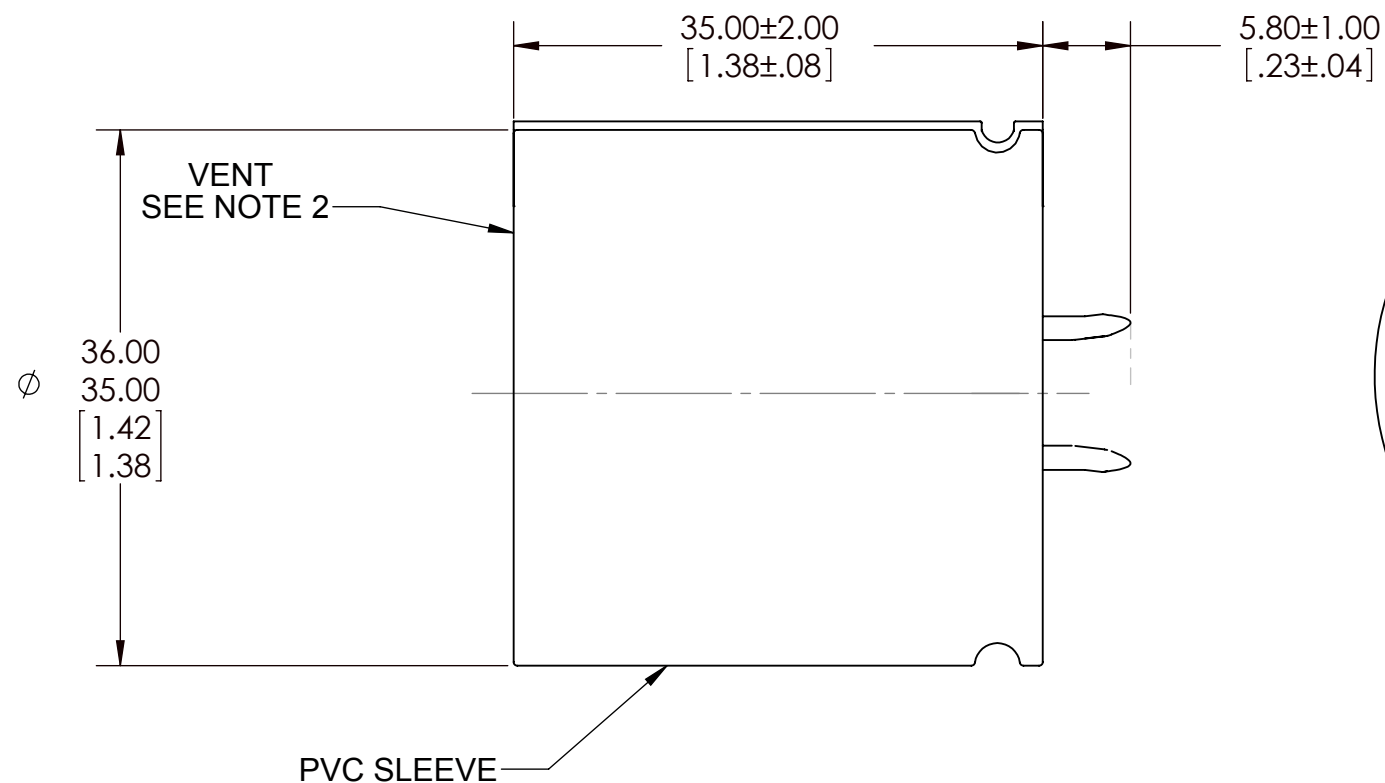
1

VICOR CONFIDENTIAL

THIS DOCUMENT AND THE DATA DISCLOSED HEREIN OR HEREWITH IS NOT TO BE REPRODUCED, USED OR DISCLOSED IN WHOLE OR IN PART TO ANYONE WITHOUT THE PERMISSION OF VICOR CORP.

REVISIONS

REV	DESCRIPTION	DATE	APPROVED
1	RELEASE PER E054210	10/17/05	SH
2	REVISED PER E100698A	5/19/10	JG



ELECTRICAL CHARACTERISTICS @ Ta= +20°C, 120Hz (UNLESS OTHERWISE SPECIFIED)

PARAMETER	SYMBOL	MIN	MAX	UNITS	TEST CONDITIONS
CAPACITANCE	C	960	1440	uF	
WORKING VOLTAGE	V _{DCW}	200		V	
SURGE VOLTAGE	V _{SURGE}		250	V	
LEAKAGE CURRENT	I _{DCL}		3.0	mA	after 5 MIN@ +20°C
DISSIPATION FACTOR	tan δ		0.15		
EQUIVALENT SERIES RESISTANCE	ESR		0.120 TYP	Ω	
RIPPLE CURRENT	I _{RIPPLE}		2.5	Arms	Ta= +105°C
OPERATING TEMPERATURE RANGE	T _{OP}	-40	+105	°C	

- NOTES:
 1. RoHS COMPLIANT, LEAD FREE PER CST-0001 LATEST REVISION.
 2. VENT MAY BE LOCATED ON EITHER SIDE OR BOTTOM OF CAP.
 3. FOR ADDITIONAL SPECS & DIMENSIONS- CONTACT VENDOR & CHECK DATA SHEET.

MAXIMUM PERMISSIBLE RIPPLE CURRENT

FREQUENCY MULTIPLIER

TEMPERATURE MULTIPLIER

FREQUENCY IN Hz						TEMPERATURE	+45°C	+60°C	+70°C	+85°C	+105°C
50	120	300	1K	10K	100K	MULTIPLIER	2.64	2.23	2.12	1.73	1.00
0.81	1	1.17	1.32	1.45	1.50						

DRAWN	DATE
P.E. IENI	08/18/05

VICOR SWD

CAPACITOR, ALEL, RADIAL, 1200uF, ±20%, 200V

MATERIAL	UNLESS OTHERWISE SPECIFIED DIMENSIONS ARE MM [INCH] TOLERANCES ARE: DECIMALS ANGLES X.XX [X.X] = ±0.01 [0.25] ±1° X.XXX [X.XX] = ±0.005 [0.127]
FINISH	THIRD ANGLE PROJECTION DO NOT SCALE DRAWING

SIZE	CAGE CODE	DWG NO	REV
B	67131	30275	2

SCALE 2 : 1 SHEET 1 OF 1

8

7

6

5

4

3

2

1