

8

7

6

5

4

3

2

1

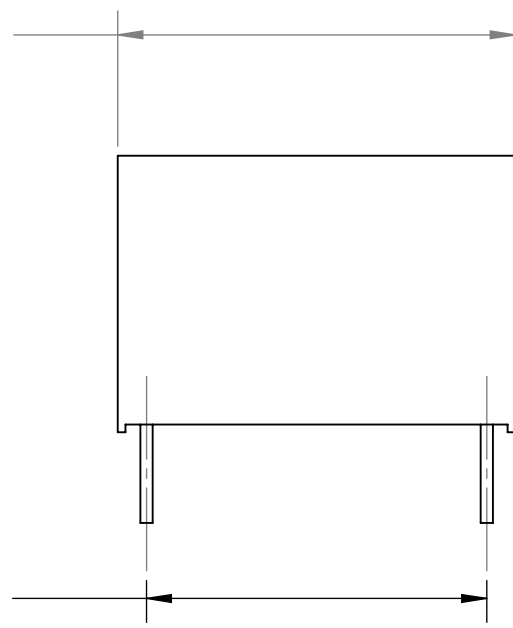
VICOR CONFIDENTIAL

THIS DOCUMENT AND THE DATA DISCLOSED HEREIN OR HEREWITH IS NOT TO BE REPRODUCED, USED OR DISCLOSED IN WHOLE OR IN PART TO ANYONE WITHOUT THE PERMISSION OF VICOR CORP.

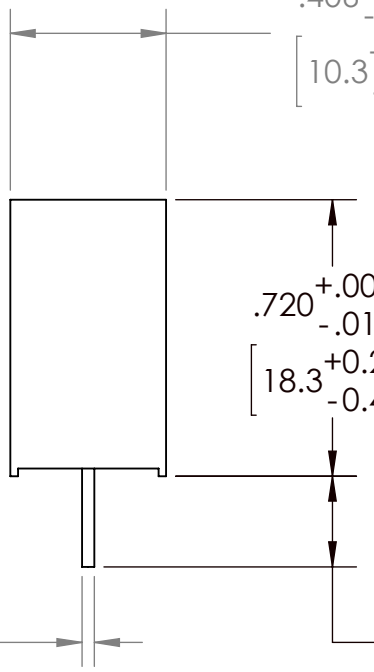
REVISIONS

REV	DESCRIPTION	DATE	APPROVED
1	RELEASE PER E020225	05/03/02	GCK
2	REVISED PER E100698A	5/19/10	JG

$1.035^{+.008}$
 $-.016$
 $[26.3^{+.0.2}]$
 $-.0.4$



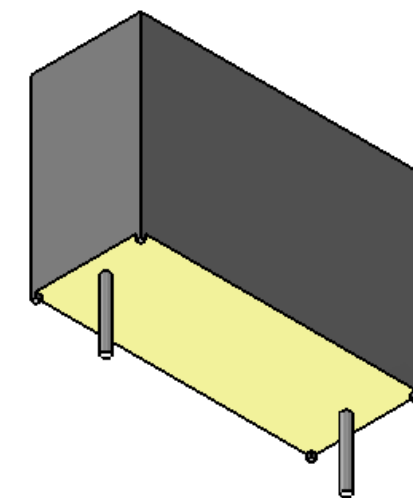
$.406^{+.008}$
 $-.016$
 $[10.3^{+.0.2}]$
 $-.0.4$



$.236^{+.000}$
 $-.039$
 $[6.0]$
 $[-1]$

ELECTRICAL CHARACTERISTICS

RATED VOLTAGE:	275 VAC, 50/60 Hz
PERMISSIBLE DC VOLTAGE:	630 Vdc
DISSIPATION FACTOR:	< 1% MEASURED AT 1 KHZ
MAXIMUM PULSE RISE TIME:	du/dt 150V / uSEC
TEST VOLTAGE:	BETWEEN TERMINATIONS 2150 Vdc / 2 SEC.
INSULATION RESISTANCE:	15000 MEGOHM MINIMUM VALUE



NOTES:

1. DIELECTRIC MATERIAL: POLYESTER-FILM (MKT)
2. COATING: PLASTIC CASE, EPOXY RESIN SEALED, FLAME RETARDANT.
3. LEADS ARE TINNED COPPER WIRE.
4. TEMPERATURE RATING: -40 TO +100°C
5. APPROVALS INCLUDE VDE,SEV,DEMKO,SEMKO,NEMKO, SETI, UL,IMQ,OVE AND CSA.
6. RoHS COMPLIANT, LEAD FREE PER CST-0001 LATEST REVISION.

DRAWN	DATE	VICOR		
P.E.IENI	3/19/02	SWD		
UNLESS OTHERWISE SPECIFIED DIMENSIONS ARE INCH [MM] TOLERANCES ARE: DECIMALS ANGLES X.XX [X.X] = ±0.01 [0.25] ±1° X.XXX [X.XX] = ±0.005 [0.127]		CAP, RFI, AXIAL 0.33uF, ± 10%, 275V, (X2)		
MATERIAL	FINISH	SIZE	CAGE CODE	DWG NO
	THIRD ANGLE PROJECTION	B	67131	00927
	DO NOT SCALE DRAWING	SCALE 2 : 1		SHEET 1 OF 1
				REV 2

8

7

6

5

4

3

2

1

F

E

D

C

B

A