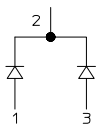
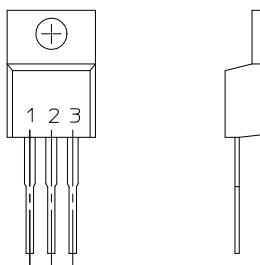


THIS DOCUMENT AND THE DATA DISCLOSED HEREIN OR HEREWITH IS NOT TO BE REPRODUCED, USED, OR DISCLOSED IN WHOLE OR IN PART TO ANYONE WITHOUT PERMISSION OF VICOR CORP.

TO-220
(SEE NOTE 2)



MARKING: VENDOR OR VICOR #02838
VENDOR DATE CODE
VENDOR I.D.
POLARITY

ELECTRICAL CHARACTERISTICS @ T_j=25°C (UNLESS OTHERWISE SPECIFIED)

PARAMETER	SYMBOL	MIN	TYP	MAX	UNITS	TEST CONDITIONS
D.C. REVERSE LEAKAGE	I _R			20	mA	V _R = 35V
D.C. REVERSE LEAKAGE	I _R			250	mA	V _R = 35V, T _j = 125°C
INSTANTANEOUS FORWARD VOLTAGE DROP	V _F			.50	V	SEE FIGURE #1 I _F = 10.0A
INSTANTANEOUS FORWARD VOLTAGE DROP	V _F			.60	V	SEE FIGURE #1 I _F = 20.0A
THERMAL RESISTANCE JUNCTION TO CASE	R _{θjc}			3.25	°C/W	
OPERATING TEMPERATURE	T _j	-55	TO	+150	°C	
AVALANCHE BREAKDOWN VOLTAGE	A _v	35			V	SEE FIGURE #1 (T _j) TEST TEMP = 25°C
AVALANCHE BREAKDOWN ENERGY	E _{as}	15			mJ	PER FIGURE #1

REV.	DESCRIPTION	DATE	APPROVED
A	RELEASED PER ECO #1607	D.Z.	6/9/89 P.M.
A1	REVISED PER E910164	JFW	6/10/91 B.JR.
B	REVISED PER E930005	JFW	1/19/93 WWP.
C	REVISED PER E931325	JC	2/23/94 J.JG.
D	REVISED PER E940748	RCM	10/14/94 DPK
E	REVISED PER E970236	DPK	6/19/97 RCM
F	REVISED PER E000335	PEI	8/28/00 DPK
7	REVISED PER E080709	SA	4/8/08 EF

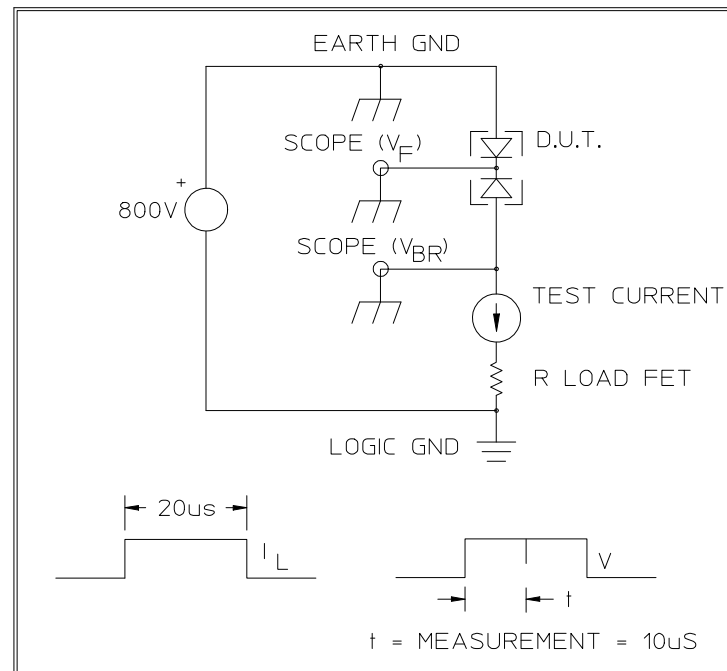


FIG. #1

NOTES

- LEADS TO BE MATTE TIN SOLDER TINNED TO WITHIN .08 OR LESS OF BODY.
- MECHANICAL SPECIFICATIONS FOR TO-220 OUTLINE PER VICOR 16435.
- RoHS COMPLIANT PER CST-0001 LATEST REVISION.

UNLESS OTHERWISE SPECIFIED DIMENSIONS ARE IN INCHES TOLERANCES ARE: FRACTIONS DECIMALS ANGLES ± 1/64 .XX ± .01 ± ° .XXX ± NONE	APPROVALS	DATE		
	DRAWN: J.P. O'NEIL	10/88		
THIRD ANGLE PROJECTION	CHECKED:		RECTIFIER, TO-220 DUAL SCHOTTKY, 35V	
			SIZE (FSCM NO.) C 67131	DWG. NO. 02838
DO NOT SCALE DRAWING			SCALE NONE	SHEET 1 OF 1