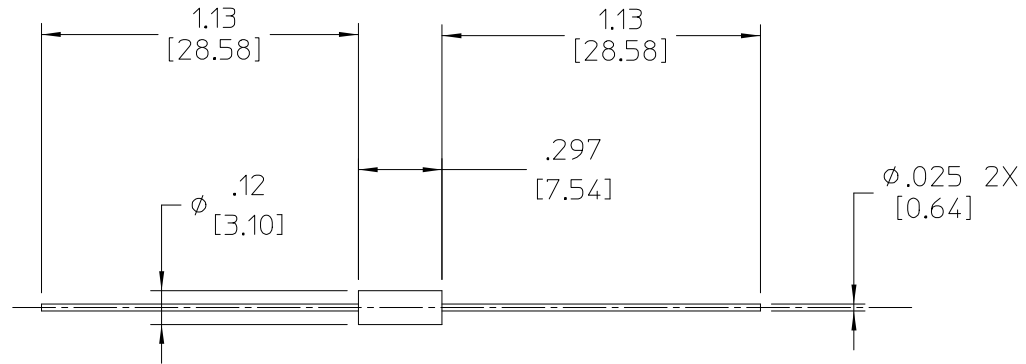


VICOR CONFIDENTIAL

THIS DOCUMENT AND THE DATA DISCLOSED HEREIN OR HEREWITH IS NOT TO BE REPRODUCED, USED, OR DISCLOSED IN WHOLE OR IN PART TO ANYONE WITHOUT PERMISSION OF VICOR CORP.

REV.	DESCRIPTION	DATE	APPROVED
1	RELEASED PER E055019	LEK 09/16/05	SH
2	Revise per E080711	SRG 04/04/08	GK


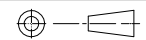


SPECIFICATIONS

PRODUCT CODE	RATED VOLTAGE		INTERRUPTING RATING ¹		PRE-ARCHING ² I ² T (A ² SEC)		TYPICAL TOTAL CLEARING ² I ² T (A ² SEC)		TYPICAL VOLTAGE DROP VOLTS AT 100% RATED
	AC	DC	AC	DC	AC	DC	AC	DC	
MCR-7	60V	90V	50A	300A	1.48	.49	2.02	.58	.10

NOTES:

1. INTERRUPTING RATINGS WERE MEASURED AT 100% (1/16 TO 5) AND 100% (7,10) POWER FACTORS ON AC AND A TIME CONSTANT LESS THAN 1ms ON DC.
2. I²T WAS MEASURED AT 50 AMOS 125 VAC .95PF (RANDOM CLOSING ANGLE) AND 300 AMPS 125 VDC, TC<1ms FOR 1/16 THROUGH 5 AMPS AND 50 AMPS 60VAC, .95PF (RANDOM CLOSING ANGLE) AND 300 AMPS 90VDC, TC<1ms FOR THE 7 AND 10 AMP FUSES.
3. RoHS COMPLIANT, LEAD FREE PER CST-0001 LATEST REVISION.

DRAWN BY <i>DPK</i>		DATE <i>07/28/05</i>		 <p>FUSE, 7A, 60Vac/125Vdc LEADED</p>			
<small>UNLESS OTHERWISE SPECIFIED DIMENSIONS ARE IN IN/[MM]- TOLERANCES ARE:</small> <small>DECIMALS</small> .XX= ± .01 [0.250] .XXX= ± .005 [0.127] <small>ANGLES</small> ± 1°							
THIRD ANGLE PROJECTION		SIZE	FSCM NO.	DWG NO	REV		
		B	67131	30236	2		
DO NOT SCALE DRAWING		SCALE	2/1	SHEET 1 OF 1			